



Event Space Guide

LOS ANGELES BALLROOM

California Level P2



Feet	139' x 91'
Meters	42.3 x 27.7
Sq. Feet	13,078
Sq. Meter	1,214
Height (Feet)	20'
Height (Meter)	6
66" Rounds	1,000
Reception	1,868
Theatre	1,300
Classroom	756
Board Room	-
U-Shape	-
Hollow Square	-
Max. Occ.	1,868

The Los Angeles Ballroom is the most iconic ballroom in Los Angeles, which has been home to awards shows, charitable events, and social gatherings since 1966. The newly renovated space spans over 13,000 square feet with a ceiling height of 20 feet and can be separated into up to 3 different spaces. Guests will be grandly welcomed by a private event valet entrance accessible from Constellation Boulevard and a stunning pre-function space that is just under 10,000 square feet. The Los Angeles Ballroom is a blank canvas for a masterpiece event.

Here is a link to a Virtual Tour of our event spaces for your reference:

[3-D Model Gallery - Fairmont Century Plaza, Los Angeles \(visitingmedia.com\)](#)

LOS ANGELES PRE-FUNCTION

California Level P2



Feet	160' x 61'
Meters	48.7 x 18.6
Sq. Feet	9,760
Sq. Meter	906
Height (Feet)	9' – 18.9'
Height (Meter)	2.7 – 5.7
66" Rounds	-
Reception	1,828
Theatre	-
Classroom	-
Board Room	-
U-Shape	-
Hollow Square	-
Max. Occ.	1,828

At just under 10,000 square feet, the Los Angeles Ballroom's pre-function space is the perfect location to welcome your guests. With doors directly opening to the private event valet, the Los Angeles Pre-Function space is suited not just for a reception style event, but also for registration, a red carpet, or even a lounge space to end the evening's affairs.

Here is a link to a Virtual Tour of our event spaces for your reference:

[3-D Model Gallery - Fairmont Century Plaza, Los Angeles \(visitingmedia.com\)](https://visitingmedia.com/3-D-Model-Gallery-Fairmont-Century-Plaza-Los-Angeles)

CONSTELLATION BALLROOM

California Level P2



Feet	42' x 73'
Meters	12.8 x 22.2
Sq. Feet	3,066
Sq. Meter	284
Height (Feet)	20'
Height (Meter)	6
66" Rounds	220
Reception	466
Theatre	250
Classroom	150
Board Room	52
U-Shape	63
Hollow Square	78
Max. Occ.	466

At over 3,000 square feet, the beautiful Constellation Ballroom is a more intimate option for up to 330 seated guests. The room features a ceiling height of 20', with eight stunning gold chandeliers. Constellation Ballroom can be divided in two equal sections, to create an event space perfect for a smaller group. Guests will be grandly welcomed by a private event valet entrance from Constellation Boulevard and a private pre-function space that is just over 2,000 square feet.

Here is a link to a Virtual Tour of our event spaces for your reference:

[3-D Model Gallery - Fairmont Century Plaza, Los Angeles \(visitingmedia.com\)](https://visitingmedia.com/fairmont-century-plaza-3d-model-gallery)

CONSTELLATION PRE-FUNCTION

California Level P2



Feet	35' x 64'
Meters	10.6 x 19.5
Sq. Feet	2,240
Sq. Meter	208
Height (Feet)	8'3"
Height (Meter)	2.5
66" Rounds	140
Reception	466
Theatre	250
Classroom	150
Board Room	52
U-Shape	63
Hollow Square	78
Max. Occ.	466

Constellation Ballroom's private pre-function space, spanning over 2,000 square feet, is the perfect addition for all of the important accents of your event. Whether you are setting up a step & repeat, registration, or a grand buffet, this pre-function space will fulfill any need.

Here is a link to a Virtual Tour of our event spaces for your reference:

[3-D Model Gallery - Fairmont Century Plaza, Los Angeles \(visitingmedia.com\)](https://visitingmedia.com)

GALAXY

California Level P2



Feet	29' x 42'
Meters	8.8 x 12.8
Sq. Feet	1,218
Sq. Meter	113
Height (Feet)	9'
Height (Meter)	2.8
66" Rounds	80
Reception	85
Theatre	100
Classroom	63
Board Room	30
U-Shape	24
Hollow Square	30
Max. Occ.	85

On the same level as Fairmont Century Plaza's stunning ballrooms, Galaxy private room offers space for up to 85 guests. With gorgeous light wood accents and areas for storage, Galaxy is a great option for meetings and private events alike. The space can also be used as a supporting room for larger events in the ballrooms.

Here is a link to a Virtual Tour of our event spaces for your reference:

[3-D Model Gallery - Fairmont Century Plaza, Los Angeles \(visitingmedia.com\)](https://visitingmedia.com/3-D-Model-Gallery-Fairmont-Century-Plaza-Los-Angeles)

MERIDIAN

California Level P2



Feet	27' x 30'
Meters	8.2 x 9.1
Sq. Feet	810
Sq. Meter	75
Height (Feet)	9'
Height (Meter)	2.8
66" Rounds	60
Reception	58
Theatre	58
Classroom	24
Board Room	24
U-Shape	21
Hollow Square	24
Max. Occ.	58

On the same level as Fairmont Century Plaza's stunning ballrooms, Meridian private room acts as the most intimate space on the California level, with room for up to 58 guests. With gorgeous light wood accents and areas for storage, Meridian is a great option for meetings and private events alike. The space can also be used as a supporting room for larger events in the ballrooms.

Here is a link to a Virtual Tour of our event spaces for your reference:

[3-D Model Gallery - Fairmont Century Plaza, Los Angeles \(visitingmedia.com\)](https://visitingmedia.com/3-D-Model-Gallery-Fairmont-Century-Plaza-Los-Angeles)

ZENITH

California Level P2



Feet	42' x 30'
Meters	12.8 x 9.1
Sq. Feet	1,260
Sq. Meter	117
Height (Feet)	9'
Height (Meter)	2.8
66" Rounds	80
Reception	86
Theatre	96
Classroom	72
Board Room	24
U-Shape	27
Hollow Square	30
Max. Occ.	86

On the same level as Fairmont Century Plaza's stunning ballrooms, Zenith private room is our largest private space on the California level, with room for up to 86 guests. With gorgeous light wood accents and areas for storage, Zenith is a great option for meetings and private events alike. The space can also be used as a supporting room for larger events in the ballrooms.

Here is a link to a Virtual Tour of our event spaces for your reference:

[3-D Model Gallery - Fairmont Century Plaza, Los Angeles \(visitingmedia.com\)](https://visitingmedia.com)

BEL AIR

California Level P1



Feet	28' x 25'
Meters	8.5 x 7.6
Sq. Feet	700
Sq. Meter	65
Height (Feet)	11'
Height (Meter)	3.4
66" Rounds	50
Reception	48
Theatre	48
Classroom	24
Board Room	20
U-Shape	21
Hollow Square	24
Max. Occ.	48

On the opposite side of the Century Level, Bel Air private room can accommodate up to 48 guests. With dark wood accents and great audio visual capabilities, Bel Air is an ideal option for your upcoming event.

Here is a link to a Virtual Tour of our event spaces for your reference:

[3-D Model Gallery - Fairmont Century Plaza, Los Angeles \(visitingmedia.com\)](https://visitingmedia.com/3-D-Model-Gallery-Fairmont-Century-Plaza-Los-Angeles)

BRENTWOOD

California Level P1



Feet	45' x 26'
Meters	13.7 x 7.9
Sq. Feet	1,170
Sq. Meter	108
Height (Feet)	11'
Height (Meter)	3.4
66" Rounds	70
Reception	79
Theatre	80
Classroom	42
Board Room	30
U-Shape	33
Hollow Square	36
Max. Occ.	79

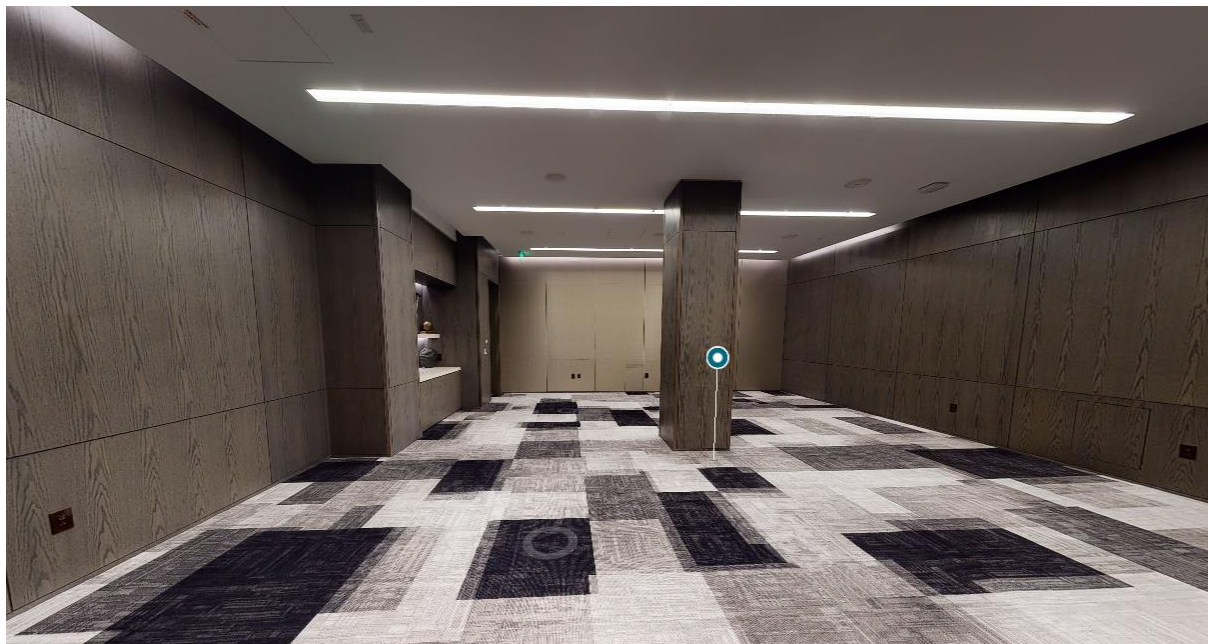
At just over 1,100 square feet, Brentwood is the largest private room on the upper Century Level. The space can welcome up to 79 guests for meetings, breakouts, and meals alike. With dark wood accents and great audio visual capabilities, Brentwood is an ideal option for your upcoming event.

Here is a link to a Virtual Tour of our event spaces for your reference:

[3-D Model Gallery - Fairmont Century Plaza, Los Angeles \(visitingmedia.com\)](https://visitingmedia.com/3-D-Model-Gallery-Fairmont-Century-Plaza-Los-Angeles)

WESTWOOD

California Level P2



Feet	28' x 30'
Meters	8.5 x 9.1
Sq. Feet	840
Sq. Meter	78
Height (Feet)	11'
Height (Meter)	3.4
66" Rounds	50
Reception	55
Theatre	62
Classroom	30
Board Room	20
U-Shape	15
Hollow Square	18
Max. Occ.	55

With event space for up to 52 guests, Westwood private room sits alongside multiple other spaces on the Century Level. With dark wood accents and great audio visual capabilities, Westwood is an ideal option for your upcoming meeting, breakout, and meal alike.

Here is a link to a Virtual Tour of our event spaces for your reference:

[3-D Model Gallery - Fairmont Century Plaza, Los Angeles \(visitingmedia.com\)](https://visitingmedia.com/3-D-Model-Gallery-Fairmont-Century-Plaza-Los-Angeles)

HOLLYWOOD

California Level P1



Feet	25' x 30'
Meters	7.6 x 9.1
Sq. Feet	750
Sq. Meter	69
Height (Feet)	11'
Height (Meter)	3.4
66" Rounds	50
Reception	52
Theatre	55
Classroom	24
Board Room	18
U-Shape	21
Hollow Square	24
Max. Occ.	52

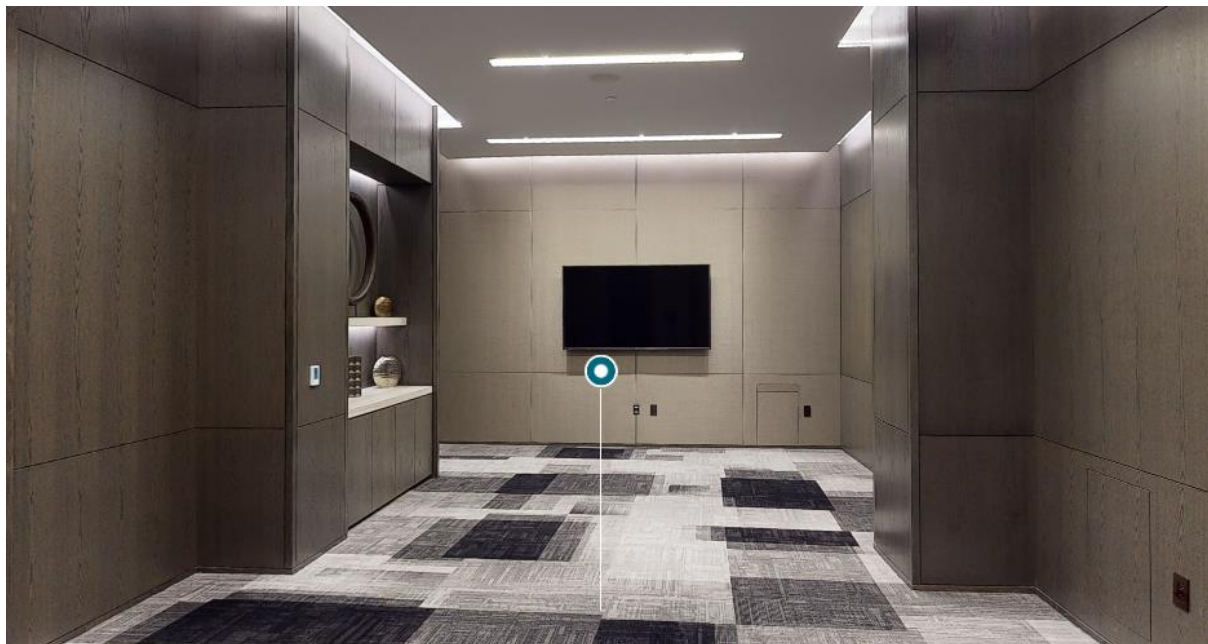
The Hollywood private room is a unique event space as it connects to our smaller Pacific Palisades private room. Accommodating up to 52 guests, Hollywood is a beautiful option for meetings, breakouts, and meals alike. With dark wood accents and great audio visual capabilities, Hollywood is an ideal option for your upcoming event.

Here is a link to a Virtual Tour of our event spaces for your reference:

[3-D Model Gallery - Fairmont Century Plaza, Los Angeles \(visitingmedia.com\)](#)

PACIFIC PALISADES

California Level P1



Feet	15' x 20'
Meters	4.5 x 6.1
Sq. Feet	300
Sq. Meter	27
Height (Feet)	11'
Height (Meter)	3.4
66" Rounds	20
Reception	21
Theatre	24
Classroom	12
Board Room	18
U-Shape	21
Hollow Square	18
Max. Occ.	21

Pacific Palisades private room is a great support option for its adjacent and connected Hollywood room. Transform it into a greenroom, office, storage, or a breakout, this event space for up to 21 guests will not disappoint.

Here is a link to a Virtual Tour of our event spaces for your reference:

[3-D Model Gallery - Fairmont Century Plaza, Los Angeles \(visitingmedia.com\)](https://visitingmedia.com)

CENTURY BOARDROOM

California Level P1



Feet	14' x 25'
Meters	4.2 x 7.6
Sq. Feet	350
Sq. Meter	32
Height (Feet)	11'
Height (Meter)	3.4
66" Rounds	-
Reception	-
Theatre	-
Classroom	-
Board Room	12
U-Shape	-
Hollow Square	-
Max. Occ.	-

Our Century Level meeting spaces, located one level below the main lobby. This level of event space houses six private rooms available for meetings, breakouts and meals alike.

Our most intimate space, the Century Boardroom, is available for groups of up to 12 and includes a built-in boardroom table perfect for all your important meetings. With dark wood accents and great audio-visual capabilities, our Century Level meeting spaces are perfect for your next event.

Here is a link to a Virtual Tour of our event spaces for your reference:

[3-D Model Gallery - Fairmont Century Plaza, Los Angeles \(visitingmedia.com\)](https://visitingmedia.com)

GOLD LOUNGE & TERRACE

Lobby Level



Here is a link to a Virtual Tour of our event spaces for your reference:

[3-D Model Gallery - Fairmont Century Plaza, Los Angeles \(visitingmedia.com\)](https://visitingmedia.com)

FRENCH GARDEN

Lumiere

Lumière offers a taste of a traditional French-inspired fare blending the best of the old world and new world. French antiques and authentic décor pepper the space, along with elaborate tilework, rich leather walls, plush banquettes, brass accents and a gorgeous zinc bar, all warmly lit by century-old chandeliers.

With no detail overlooked, guests can dine in the outdoor courtyard; sure to transport you to a hidden Parisian courtyard, outfitted with magnolia trees, jasmine and lavender plants. Our Zut Alors' seafood towers and magnums of champagne will be sure to elevate your dining experience, with intimate, private dining spaces available for special moments and events.



Here is a link to a Virtual Tour of our event spaces for your reference:

[3-D Model Gallery - Fairmont Century Plaza, Los Angeles \(visitingmedia.com\)](https://visitingmedia.com)

PLAZA LAWN

Lobby Level

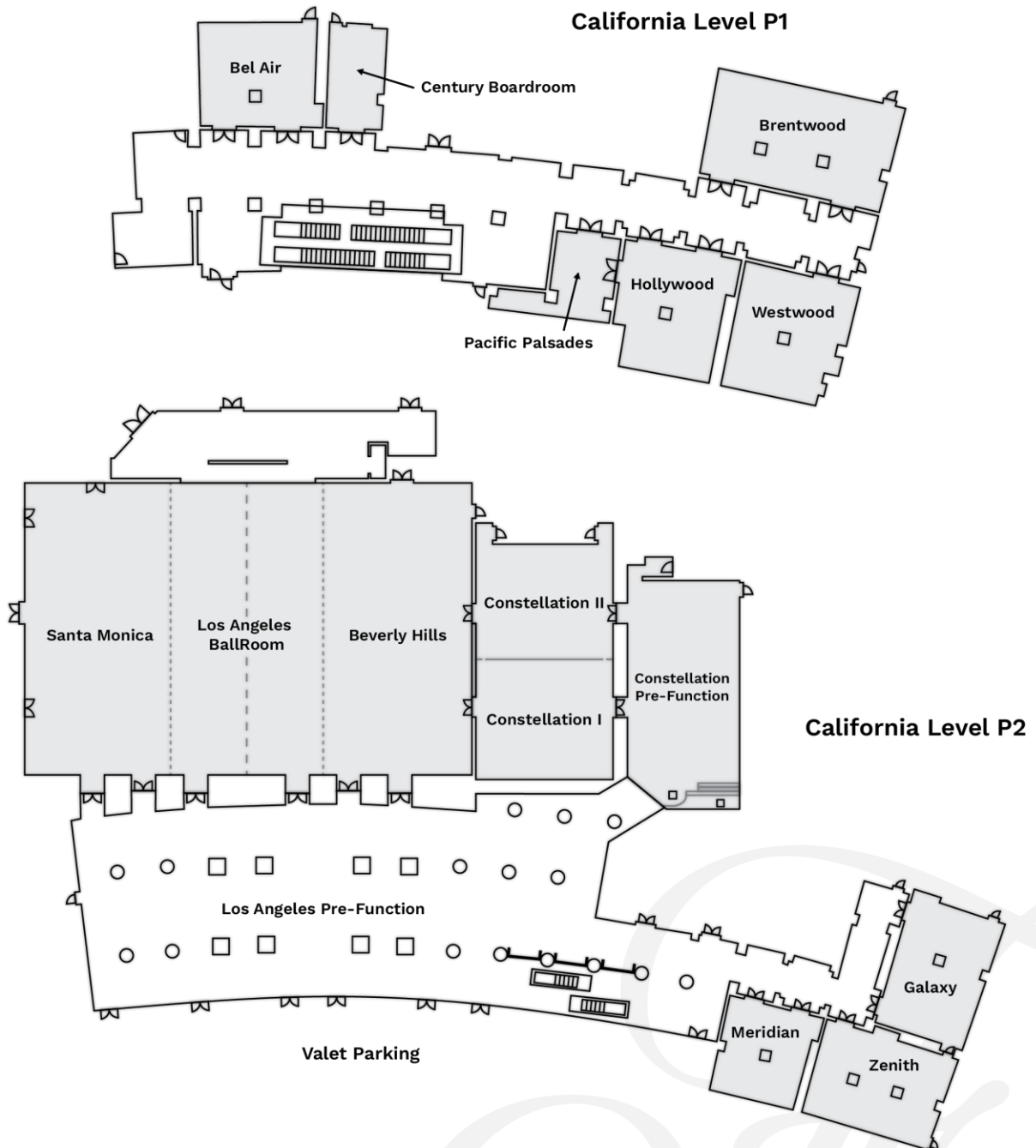


Here is a link to a Virtual Tour of our event spaces for your reference:

[3-D Model Gallery - Fairmont Century Plaza, Los Angeles \(visitingmedia.com\)](https://visitingmedia.com)

EVENT SPACES

California Levels P1 & P2



Here is a link to a Virtual Tour of our event spaces for your reference:

[3-D Model Gallery - Fairmont Century Plaza, Los Angeles \(visitingmedia.com\)](http://visitingmedia.com)

Fairmont

CENTURY PLAZA

2025 Avenue of the Stars, Los Angeles, CA, US, 90067

fairmontcenturyplaza.com